

# All-rounders for general use

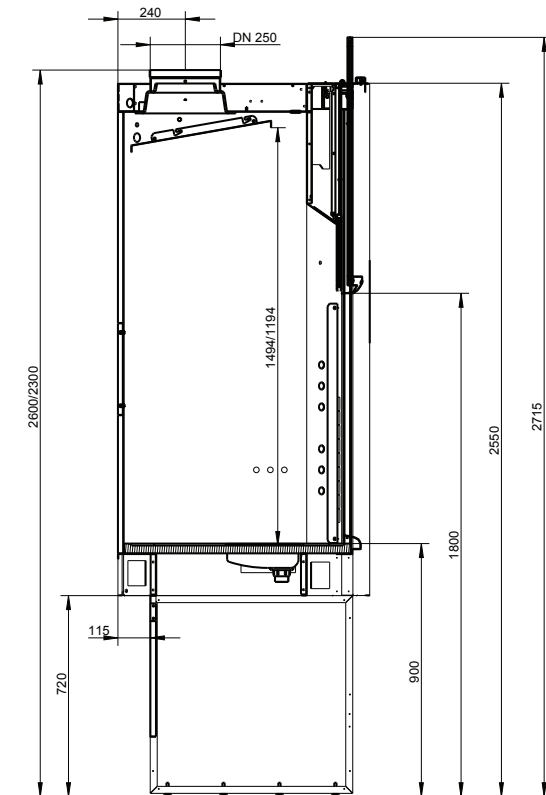


Ideal for working with organic solvents and cold or diluted acids. Depending on the ceiling height of your laboratory, you can choose between tall or low designs.



- ✓ Fume cupboard for low ceiling height with unique low installation height (2250 mm)
- ✓ Above-average usable worktop depth
- ✓ Underbench storage for tall utensils up to 720 mm
- ✓ Metallic construction enables columns with hollow spaces at the front – for easy maintenance and protection against air leakage
- ✓ Side or front service connections for easy tapping of water, gas, etc.



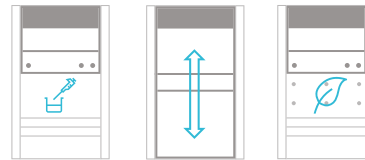


Width	1200	1500	1800	2000	2100
Front height	2300/2550	2300/2550	2300/2550	2300/2550	2300/2550
Chamber height	2300/2600	2300/2600	2300/2600	2300/2600	2300/2600
Depth	900	900	900	900	900
Usable space width	1100	1400	1700	1900	2000
Usable space height	1190/1490	1190/1491	1190/1492	1190/1493	1190/1494
Usable space depth	800	800	800	800	800
Work height	900	900	900	900	900
Minimal permissible volume flow rate**	450	530	680	800	800
Specified volume flow rate	480	600	720	840	840
Maximum permissible volume flow rate	1500	1500	1500	1500	1500

Dimensions [mm] / Volume flow rate [m<sup>3</sup>/h]

\*\* Alarm value

# Fume cupboards for general use



	Suitable	Occasional use	Not suitable
Organic solvents	x		
Weak acids	x		
Diluted inorganic acids	x		
Cold concentrated inorganic acids		x	
Hot concentrated inorganic acids			x
Hydrofluoric acid			x
Radioactive substances			x
High thermal load			x

When selecting a fume cupboard, the most important considerations are the activities you do and the substances you use.

Your work is what matters



Fume cupboards for general use with chemical-resistant Trespa TopLab® Vertical lining

	Suitable	Occasional use	Not suitable
Organic solvents	x		
Weak acids	x		
Diluted inorganic acids	x		
Cold concentrated inorganic acids	x		
Hot concentrated inorganic acids		x	
Hydrofluoric acid			x
Radioactive substances			x
High thermal load			x

When selecting a fume cupboard, the most important considerations are the activities you do and the substances you use.